



 **Herz**®

www.herz.eu

fresh

Фреш – освежите свой дом!

Смесители линии Фреш исключительно подходят для каждого дома.

В современных квартирах они будут сочетаться с подобранными вами элементами обстановки, и вернут свежесть помещениям старой постройки.

HERZ – разница в качестве!

Сантехнические смесители HERZ – это изделия с многолетними традициями производителя и проверенным качеством. На все изделия мы получили большинство важнейших европейских сертификатов качества.

Мы полностью уверены в качестве наших изделий, поэтому обеспечиваем вам гарантию на все однорычажные смесители в течение 6 лет.



Смеситель для
умывальника
Basin mixer
Waschtischarmatur



Смеситель для
умывальника
Basin mixer
Waschtischarmatur



Смеситель для биде
Bidet mixer
Bidetarmatur



Смеситель для душа с
термостатированием
Thermostat Shower mixer
Thermostat Brausebatterie



FRESH – refresh your home!

Taps and mixers from the Fresh family fit very nicely in every home.

In modern apartments they fit into the surroundings, while older apartments are revitalised.

HERZ – the difference is in the quality!

Sanitary fittings from HERZ are product from a manufacturer with many years' tradition and assured quality. For our products we have acquired the majority of the most important European quality certificates.

We are so confident in the quality of our products that we offer you a **6 year guarantee** on all the single lever fittings.



Смеситель для ванны
Bath shower mixer
Wannenbatterie



fresh

FRESH – erfrischen Sie Ihr Zuhause!

Die Armaturen der Familie FRESH passen sehr gut in jedes Zuhause. Modernen Wohnungen geben sie den letzten Schliff, und ältere Wohnungen erhalten neue Frische.

HERZ – der Unterschied ist in der Qualität!

Die Sanitärarmatur HERZ ist das Produkt eines Herstellers mit langjähriger Tradition und bewährter Qualität. Für unsere Produkte haben wir den Großteil der wichtigsten europäischen Qualitätszertifikate erlangt.

Von der Qualität unserer Produkte sind wir so sehr überzeugt, dass wir Ihnen eine **6 jährige Garantie** auf alle Einhebel-Mischer Armaturen gewähren.



Смеситель для кухни
Sink mixer
Spültischarmatur



Смеситель для кухни с
термостатированием
Thermostat Sink mixer
Thermostat Spültischarmatur



Смеситель для кухни
Sink mixer
Spültischarmatur

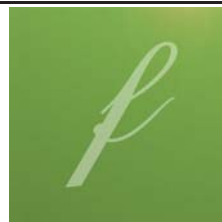
ООО ГЕРЦ Арматурен
127273, г. Москва,
Сигнальный проезд, д. 19
тел.:
+(495) 617-09-15
факс:
+(495) 617-09-14
e-mail:
offi ce@herz-armaturen.ru
www.herz-armaturen.ru

ГЕРЦ Украина
02002, г. Киев, ул. А.
Луначарского, 10
тел.: (044) 569 57 07, 08
(многоканальный)
факс: (044) 569 57 09
E-mail:
kyiv@herz-armaturen.
com.ua
Internet:
www.herz-armaturen.com.ua

HERZ Valves UK
Progress House • Moorfield
Point; Moorfield Road •
Slyfield Industrial Estate
Guildford • Surrey • GU1
1RU
Phone: 01483 502211
Fax: 01483 502025
e-mail:
sales@herzvalves.com
www.herzvalves.com

HERZ Armaturen
D-71522 Backnang
Fabrikstraße 76
Telefon:
+49/(0)7191/9021-0
Fax :
+49/(0)7191/9021-79
e-mail:
verkauf@herz-armaturen.de
www.herz-armaturen.de

HERZ Armaturen
Ges.m.b.H.
A-1230 Wien
Richard-Strauss-Straße 22
Telefon:
+43/(0)1/616 26 31-0
Telefax:
+43/(0)1/616 26 31-27
e-mail: offi ce@herz.eu
www.herz.eu



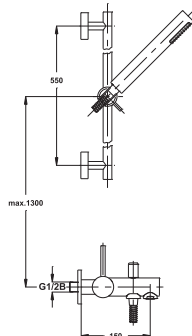
Sanitary Mixer FRESH

Shower / Bath Mixer

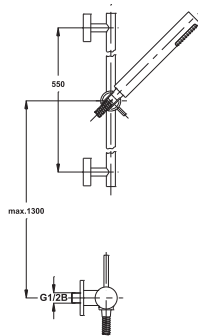
Datasheet

00335

00435



00335



00435

Model	Colour	Contents of package
00335	Chrome	Hand shover and sliding rail, hose
00435	Chrome	Hand shover and sliding rail, hose

Contents and colour

Body: brass acc. EN 12164, chrom plated
 Cartridge: 35 mm
 Handle: brass, chrom plated
 Sealing elements: rubber EPDM
 Brass spout L=100 mm
 Automatic diverter Neoperl
 Flexible double interlock stainless steel hose L=1500 mm
 Hand shover and sliding rail

Construction

Connections:	Flexible connecting hose for domestic tap fittings G3/8x450
Recommendable pressure:	Working pressure: up to 3 - 5 bar
Maximum pressure:	Working pressure: up to 8 bar
Minimum pressure:	Working pressure: up to 0,5 bar
Recommendable temp.:	Working temperature: 5 - 65°C
Maximum temperature:	Working temperature: 80°C

Specification

Sanitary Mixer FRESH

Basin Mixer

Datasheet

00035 00040
00038 01035
00039

You have to wash out all pipes before assembling.

Connect sanitary mixer and primary water pipe with flexible hose. Remove aerator and rotate mixer handle in totally open position. Slowly open pipe valves and manipulate with mixer handle in all positions.

Repairment of the mixer must be always performed by a qualified person. After assembling, we advice to wash out mixer for one hour.

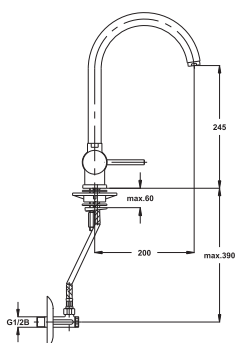
We recommend to reduce water pressure over 5 bar with suitable pressure reducer.

**Instruction for
assembling
and maintenance**

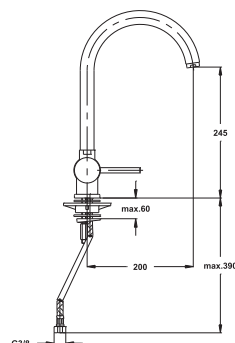
Sanitary Mixer FRESH

Sink Mixer

Datasheet
00135
00136



00135



00136

Model	Colour	Contents of package
00135	Chrome	Ball valve
00136	Chrome	/

Contents and colour

Body:	brass acc. EN 12164, chrom plated
Cartridge:	40 mm
Handle:	brass, chrom plated
Sealing elements:	rubber EPDM
Option:	spout rotates around its horizontal axis.

Construction

Connections:	Flexible connecting hose for domestic tap fittings G3/8x450
Recommendable pressure:	Working pressure: up to 3 - 5 bar
Maximum pressure:	Working pressure: up to 8 bar
Minimum pressure:	Working pressure: up to 0,5 bar
Recommendable temp.:	Working temperature: 5 - 65°C
Maximum temperature:	Working temperature: 80°C

Specification

You have to wash out all pipes before assembling.

Connect sanitary mixer and primary water pipe with flexible hose. Remove aerator and rotate mixer handle in totally open position. Slowly open pipe valves and manipulate with mixer handle in all positions.

Repairment of the mixer must be always performed by a qualified person. After assembling, we advice to wash out mixer for one hour.

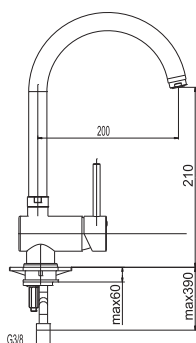
We recommend to reduce water pressure over 5 bar with suitable pressure reducer.

Instruction for assembling and maintenance

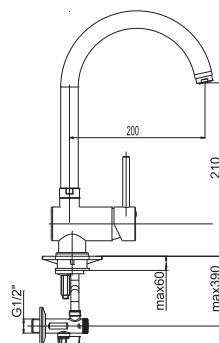
Sanitary Mixer FRESH

Sink Mixer

Datasheet
00133
00134



00133



00134

Model	Colour	Contents of package
00133	Chrome	/
00134	Chrome	Ball valve

Contents and colour

Body: brass acc. EN 12164, chrom plated
Cartridge: 40 mm
Handle: brass, chrom plated
Sealing elements: rubber EPDM

Construction

Connections:	Flexible connecting hose for domestic tap fittings G3/8x450
Recommendable pressure:	Working pressure: up to 3 - 5 bar
Maximum pressure:	Working pressure: up to 8 bar
Minimum pressure:	Working pressure: up to 0,5 bar
Recommendable temp.:	Working temperature: 5 - 65°C
Maximum temperature:	Working temperature: 80°C

Specification

You have to wash out all pipes before assembling.

Connect sanitary mixer and primary water pipe with flexible hose. Remove aerator and rotate mixer handle in totally open position. Slowly open pipe valves and manipulate with mixer handle in all positions.

Repairment of the mixer must be always performed by a qualified person. After assembling, we advice to wash out mixer for one hour.

We recommend to reduce water pressure over 5 bar with suitable pressure reducer.

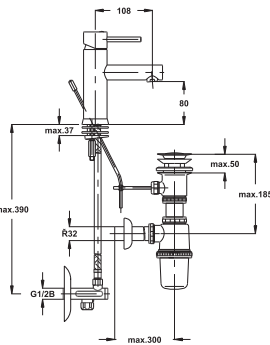
Instruction for assembling and maintenance

Sanitary Mixer FRESH

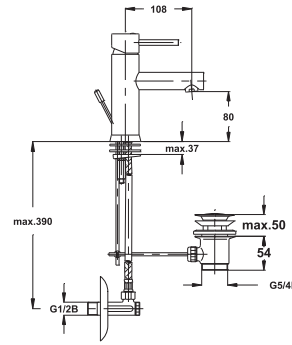
Basin Mixer

Datasheet

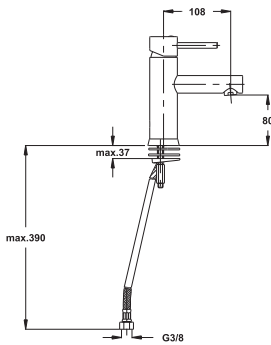
00035 00040
00038 01035
00039



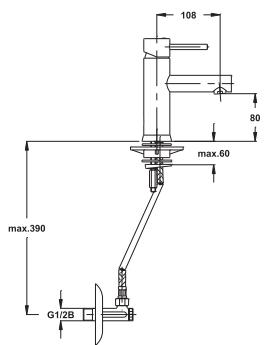
00035



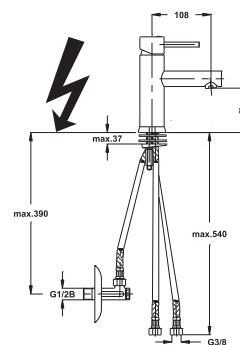
00038



00039



00040



01035

Model	Colour	Contents of package
00035	Chrome	Complete Basin trap, Ball valve
00038	Chrome	Basin trap, Ball valve
00039	Chrome	/
00040	Chrome	Ball valve
01035	Chrome	Ball valve, binder Tube for Boiler

Contents and colour

Body: brass acc. EN 12164, chrom plated
Cartridge: 35 mm
Handle: brass, chrom plated
Sealing elements: rubber EPDM

Construction

Specification	
Connections:	Flexible connecting hose for domestic tap fittings G3/8x450
Recommendable pressure:	Working pressure: up to 3 - 5 bar
Maximum pressure:	Working pressure: up to 8 bar
Minimum pressure:	Working pressure: up to 0,5 bar
Recommendable temp.:	Working temperature: 5 - 65°C
Maximum temperature:	Working temperature: 80°C

HERZ d.d., Grmaška cesta 3, 1275 Šmartno pri Litiji
tel.: +386 1 896 21 02, fax.:+386 1 896 21 40
e-mail: info@herz.si, http://www.unitas.si



Sanitary Mixer FRESH

Basin Mixer

Datasheet

00035 00040
00038 01035
00039

You have to wash out all pipes before assembling.

Connect sanitary mixer and primary water pipe with flexible hose. Remove aerator and rotate mixer handle in totally open position. Slowly open pipe valves and manipulate with mixer handle in all positions.

Decante water heater boiler: Install the special mixer for decante water heater boiler. It is not allowed to exchange connection for hot and cold water.

Repairment of the mixer must be always performed by a qualified person. After assembling, we advice to wash out mixer for one hour.

We recommend to reduce water pressure over 5 bar with suitable pressure reducer.

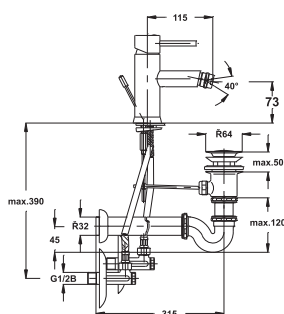
**Instruction for
assembling
and maintenance**

Sanitary Mixer FRESH

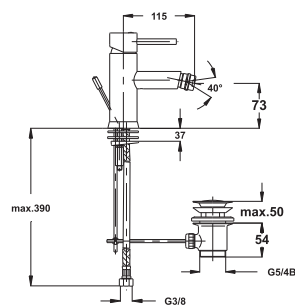
Bide Mixer

Datasheet

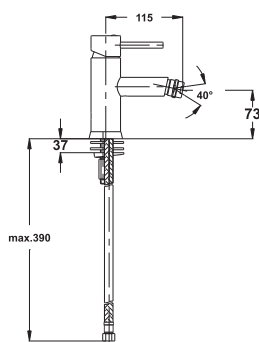
00535 00537
00536 00538



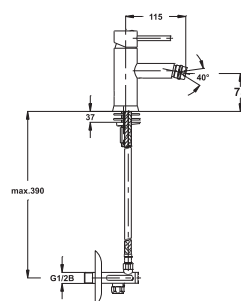
00535



00536



00537



00538

Model	Colour	Contents of package
00535	Chrome	Complete Basin trap, Ball valve
00536	Chrome	Basin trap, Ball valve
00537	Chrome	/
00538	Chrome	Ball valve

Contents and colour

Body: brass acc. EN 12164, chrom plated
Cartridge: 35 mm
Handle: brass, chrom plated
Sealing elements: rubber EPDM

Construction

Connections:	Flexible connecting hose for domestic tap fittings G3/8x450
Recommendable pressure:	Working pressure: up to 3 - 5 bar
Maximum pressure:	Working pressure: up to 8 bar
Minimum pressure:	Working pressure: up to 0,5 bar
Recommendable temp.:	Working temperature: 5 - 65°C
Maximum temperature:	Working temperature: 80°C

Specification

Sanitary Mixer FRESH

Basin Mixer

Datasheet

00035 00040
00038 01035
00039

You have to wash out all pipes before assembling.

Connect sanitary mixer and primary water pipe with flexible hose. Remove aerator and rotate mixer handle in totally open position. Slowly open pipe valves and manipulate with mixer handle in all positions.

Decante water heater boiler: Install the special mixer for decante water heater boiler. It is not allowed to exchange connection for hot and cold water.

Repairment of the mixer must be always performed by a qualified person. After assembling, we advice to wash out mixer for one hour.

We recommend to reduce water pressure over 5 bar with suitable pressure reducer.

**Instruction for
assembling
and maintenance**