

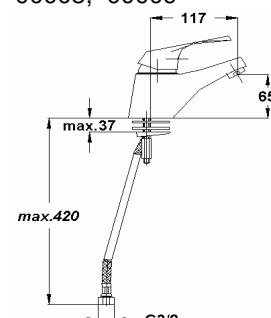
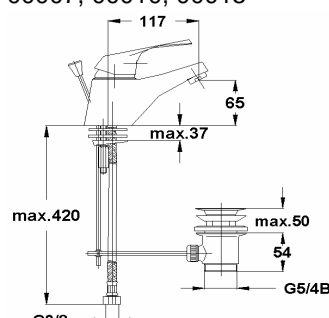
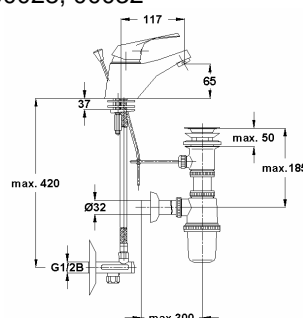
# Armature ELEGANCE Basin mixer

Data sheet for  
00027  
Valid 10.2007

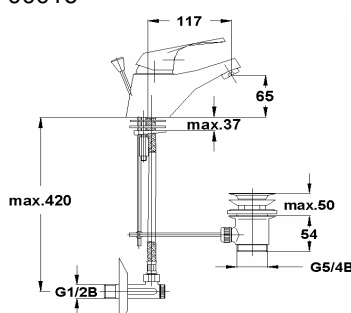
00027, 00028, 00032

00007, 00010, 00015

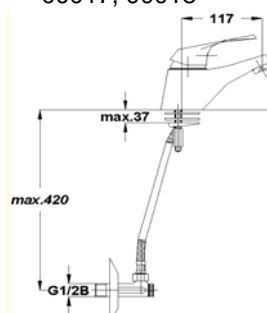
00008, 00009



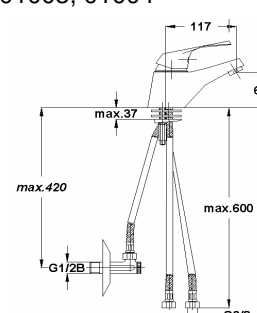
00016



00017, 00018



01003, 01004



Model:	Colour:	Model:	Colour:
00027	Chrome	00016	Chrome-Gold
00028	Chrome-Gold	00017	Chrome
00032	Sateen-Chrome	00018	Chrome-Gold
00007	Chrome	01003	Chrome
00010	Chrome-Gold	01004	Chrome-Gold
00015	Sateen-Chrome	00008	Chrome
		00009	Chrome-Gold

Body: brass acc. EN 1982, chrom plated  
Cartridge:  $\phi$  40 mm  
Handle: brass, chrom plated  
Sealing elements: rubber EPDM

## Construction

Flexible connecting hose for domestic tap fittings G3/8x450

Working pressure: up to 3 - 5 bar

Working pressure: up to 8 bar

Working pressure: up to 0,5 bar

Working temperature: 5 - 65°C

Working temperature: 80°C

Sanitary armature is used in the high pressure sanitary systems.

## Connections

Recommendable pressure

Maximum pressure

Minimum pressure

Recommendable temp.

Maximum temperature

## Application

You have to wash out all pipes before assembling.

Connect sanitary mixer and primary water pipe with flexible hose. Remove aerator and rotate mixer handle in totally open position. Slowly open pipe valves and manipulate with mixer handle in all positions. For decante water heater boiler to use regular armature. It is not allowed to exchange connection hot-cold water. Repairing the armature is allowed only performed trade person. After assembling we advice to wash out mixer for an our.

We recommended to reduce water pressure over 5 bar with suitable pressure reducer.

## Instruction for assembling and maintenance

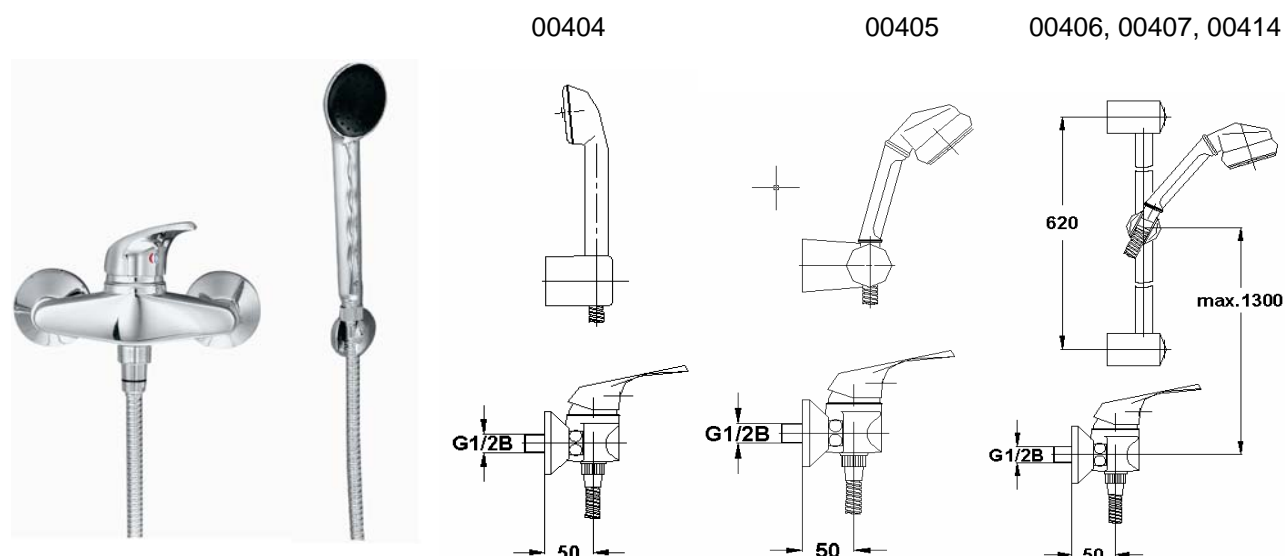
We reserve the right to make modifications  
in line with progress in engineering.



Kovinsko predelovalno podjetje d.d.  
Grmaška c.3, 1275 Šmartno pri Litiji, SLOVENIJA

# Armature ELEGANCE Shower mixer

Data sheet for  
00404  
Valid 09.2007



Model:	Colour:
00404	Chrome
00405	Chrome-Gold
00406	Chrome
00407	Chrome-Gold
00414	Sateen-Chrome

Body: cast brass acc. EN 1982, chrom plated  
Cartridge:  $\phi$  40 mm  
Handle: brass, chrom plated  
Sealing elements: rubber EPDM  
Non-return valve: CV 14/DN10

## Construction

### Eccentric system

Working pressure: up to 3 - 5 bar

Working pressure: up to 8 bar

Working pressure: up to 0,5 bar

Working temperature: 5 - 65°C

Working temperature: 70°C

## Connections

### Recommendable pressure

### Maximum pressure

### Minimum pressure

### Recommendable temp.

### Maximum temperature

Sanitary armature is used in the high pressure sanitary systems.

## Application

You have to wash out all pipes before assembling.

Connect sanitary mixer and primary water pipe with eccentric system. Remove aerator and rotate mixer handle in totally open position. Slowly open pipe valves and manipulate with mixer handle in all positions. Repairing the armature is allowed only performed trade person. After assembling we advice to wash out mixer for an our.

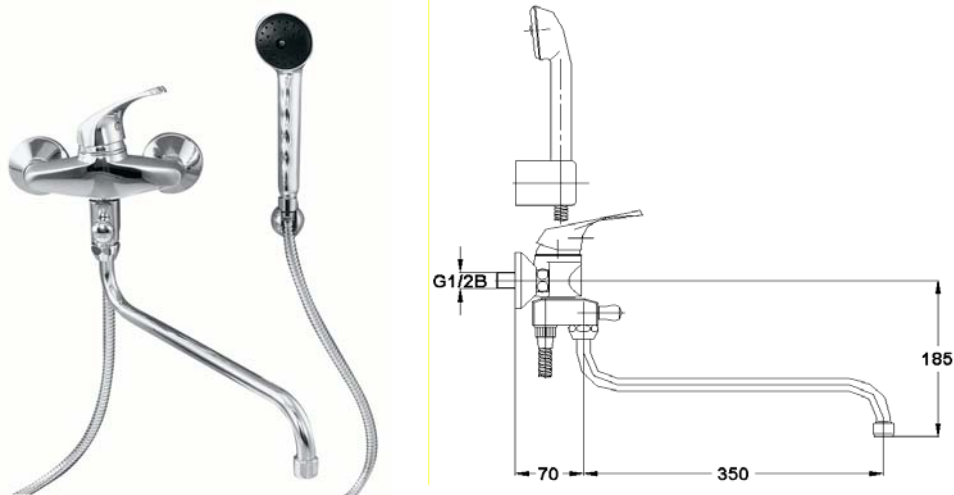
We recommended to reduce water pressure over 5 bar with suitable pressure reducer.

## Instruction for assembling and maintenance

We reserve the right to make modifications  
in line with progress in engineering.



Kovinsko predelovalno podjetje d.d.  
Grmaška c.3, 1275 Šmartno pri Litiji, SLOVENIJA

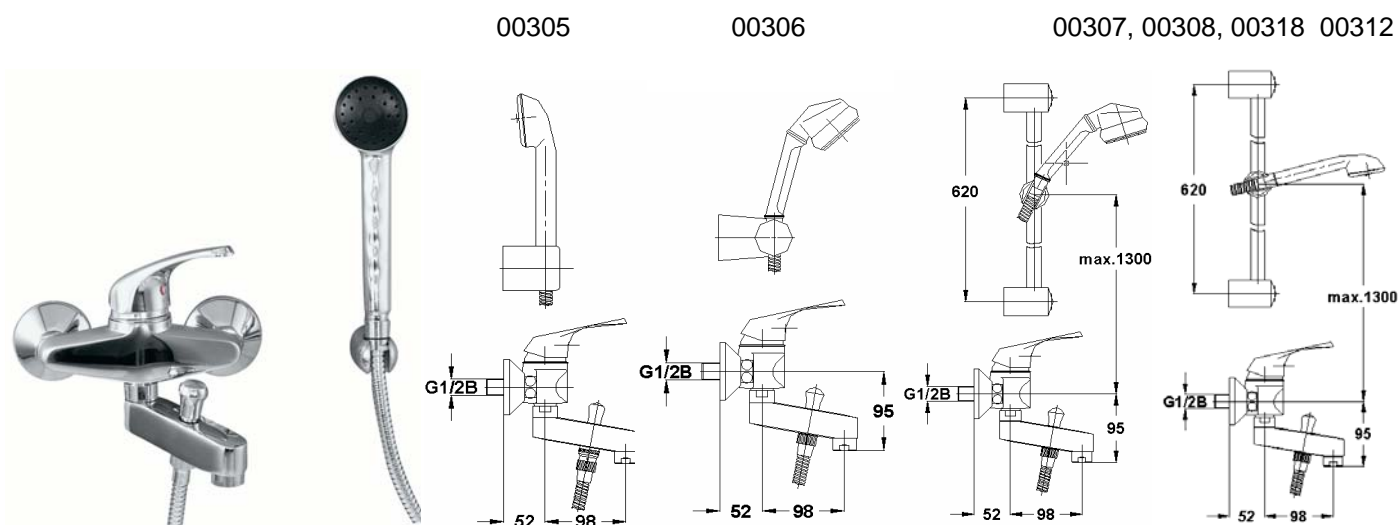
Armature ELEGANCE Bath shower mixer		Data sheet for 00341 Valid 10.2007
		
Model: 00341	Colour: Chrome	
Body:brass acc. EN 1982, chrom plated Cartridge: $\phi$ 40 mm Handle: brass, chrom plated Sealing elements: rubber EPDM Diverter switch: automatic		Construction
Eccentric system		Conections
Working pressure: up to 3 - 5 bar		Recommendable pressure
Working pressure: up to 8 bar		Maximum pressure
Working pressure: up to 0,5 bar		Minimum pressure
Working temperature: 5 - 65°C		Recommendable temp.
Working temperature: 70°C		Maximum temperature
Sanitary armaturen is used in the hight pressure sanitary systems.		Application
You have to wash out all pipes before assembling. Connect sanitary mixer and primary water pipe with eccentric system. Remove aerator and rotate mixer handle in tottaly open position. Slowly open pipe valves and manipulate with mixer handle in all possittions. Repairing the armature is allowed only performed trade person. Affter assembling we advice to wash out mixer for an our. We recommended to reduce water pressure over 5 bar with suitable pressure reducer.		Instruction for assembling and maintenance
		We reserve the right to make modifications in line with progress in engineering.



Kovinsko predelovalno podjetje d.d.  
Grmaška c.3, 1275 Šmartno pri Litiji, SLOVENIJA

# Armature ELEGANCE Bath shower mixer

Data sheet for  
00305  
Valid 09.2007



Model:	Colour:		
00305	Chrome		
00306	Chrome-Gold		
00307	Chrome		
00308	Chrome-Gold		
00318	Sateen-Chrome		
00312	Chrome		
Body:brass acc. EN 1982, chrom plated Cartridge: $\phi$ 40 mm Handle: brass, chrom plated Sealing elements: rubber EPDM Diverter switch: automatic			Construction
Eccentric system			Connections
Working pressure: up to 3 - 5 bar			Recommendable pressure
Working pressure: up to 8 bar			Maximum pressure
Working pressure: up to 0,5 bar			Minimum pressure
Working temperature: 5 - 65°C			Recommendable temp.
Working temperature: 70°C			Maximum temperature
Sanitary armaturen is used in the high pressure sanitary systems.			Application
You have to wash out all pipes before assembling. Connect sanitary mixer and primary water pipe with eccentric system. Remove aerator and rotate mixer handle in totally open position. Slowly open pipe valves and manipulate with mixer handle in all possittions. Repairing the armature is allowed only performed trade person. After assembling we advice to wash out mixer for an our. We recommended to reduce water pressure over 5 bar with suitable pressure reducer.			Instruction for assembling and maintenance
			We reserve the right to make modifications in line with progress in engineering.



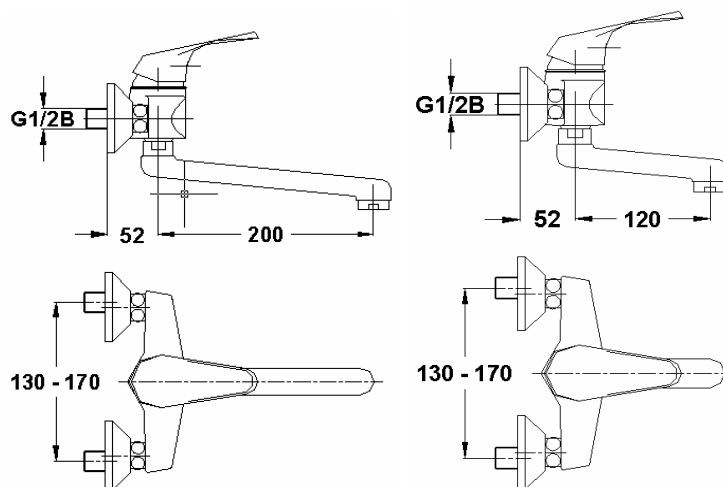
Kovinsko predelovalno podjetje d.d.  
Grmaška c.3, 1275 Šmartno pri Litiji, SLOVENIJA

# Armature ELEGANCE Wall mount kitchen faucet

Data sheet for  
00203  
Valid10.2007

00203, 00206, 00214

00204, 00207, 00215



<b>Model:</b>	<b>Colour:</b>		
00203	Chrome		
00206	Chrome-Gold		
00214	Sateen-Chrome		
00204	Chrome		
00207	Chrome-Gold		
00215	Sateen-Chrome		
<b>Body:</b> brass acc. EN 1982, chrom plated <b>Cartrigde:</b> $\phi$ 40 mm <b>Handle:</b> brass, chrom plated <b>Sealing elements:</b> rubber EPDM			<b>Construction</b>
<b>Eccentric system G1/2</b>			<b>Conections</b>
<b>Working pressure:</b> up to 3 - 5 bar			<b>Recommendable pressure</b>
<b>Working pressure:</b> up to 8 bar			<b>Maximum pressure</b>
<b>Working pressure:</b> up to 0,5 bar			<b>Minimum pressure</b>
<b>Working temperature:</b> 5 - 65°C			<b>Recommendable temp.</b>
<b>Working temperature:</b> 80°C			<b>Maximum temperature</b>
<b>Sanitary armaturen</b> is used in the hight pressure sanitary systems.			<b>Application</b>
<b>You have to wash out all pipes before assembling.</b> <b>Connect sanitary mixer and primary water pipe with eccentric system.</b> Remove aerator and rotate mixer handle in tottaly open position. Slowly open pipe valves and manipulate with mixer handle in all possittions. Repairing the armature is allowed only performed trade person. Affter assembling we advice to wash out mixer for an our. <b>We recommended to reduce water pressure over 5 bar with suitable pressure reducer.</b>			<b>Instruction for assembling and maintenance</b>
			We reserve the right to make modifications in line with progress in engineering.



Kovinsko predelovalno podjetje d.d.  
Grmaška c.3, 1275 Šmartno pri Litiji, SLOVENIJA

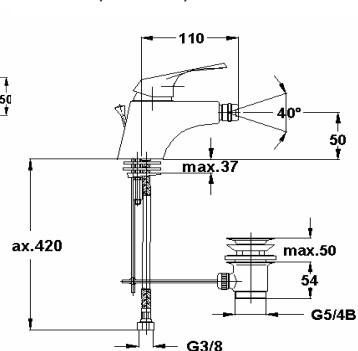
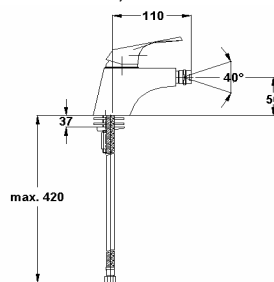
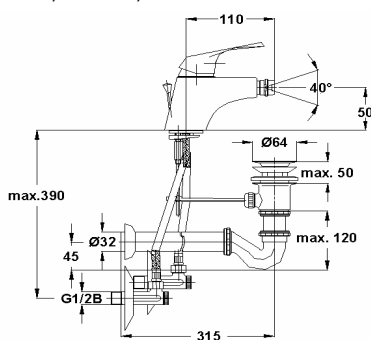
# Armature ELEGANCE Bidet mixer

Data sheet for  
00524  
Valid 09.2007

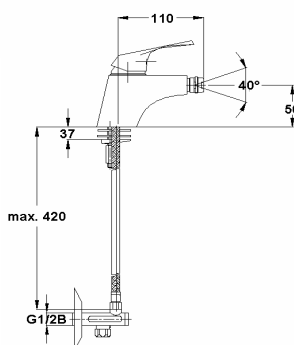
00524, 00525, 00528

00505, 00506

00504, 00507, 00512



00514



Model:	Colour:		
00524	Chrome		
00525	Chrome-Gold		
00528	Sateen-Chrome		
00505	Chrome-Gold		
00506	Chrome		
00504	Chrome		
00507	Chrome-Gold		
00512	Sateen-Chrome		
00514	Chrome		
Body: brass acc. EN 1982, chrom plated Cartridge: $\phi$ 40 mm Handle: brass, chrom plated Sealing elements: rubber EPDM		Construction	
Flexible connecting hose for domestic tap fittings G3/8x450		Connections	
Working pressure: up to 3 - 5 bar		Recommendable pressure	
Working pressure: up to 8 bar		Maximum pressure	
Working pressure: up to 0,5 bar		Minimum pressure	
Working temperature: 5 - 65°C		Recommendable temp.	
Working temperature: 80°C		Maximum temperature	
Sanitary armature is used in the high pressure sanitary systems.		Application	
You have to wash out all pipes before assembling. Connect sanitary mixer and primary water pipe with flexible hose. Remove aerator and rotate mixer handle in totally open position. Slowly open pipe valves and manipulate with mixer handle in all positions. Repairing the armature is allowed only performed trade person. After assembling we advice to wash out mixer for an our. We recommended to reduce water pressure over 5 bar with suitable pressure reducer.		Instruction for assembling and maintenance	
		We reserve the right to make modifications in line with progress in engineering.	



Kovinsko predelovalno podjetje d.d.  
Grmaška c.3, 1275 Šmartno pri Litiji, SLOVENIJA